

01  
D01 HORIZONTAL SECTION - FIXED DOUBLE GLAZED WINDOW DETAIL  
1 : 2

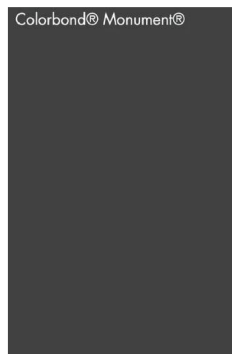
#### WINDOW FINISHES NOTE

- THESE DIAGRAMS INDICATE THE TYPICAL  
INSTALLATION WINDOW DETAILS

- EXISTING TIMBER WINDOWS TO BE REPLACED  
WILL BE AS ALUMINIUM FRAMED DOUBLE GLAZED  
WINDOWS, AS PRPOSED. MATCHING EXISTING  
SIZE AND DIMENSIONS AND OPERATION.

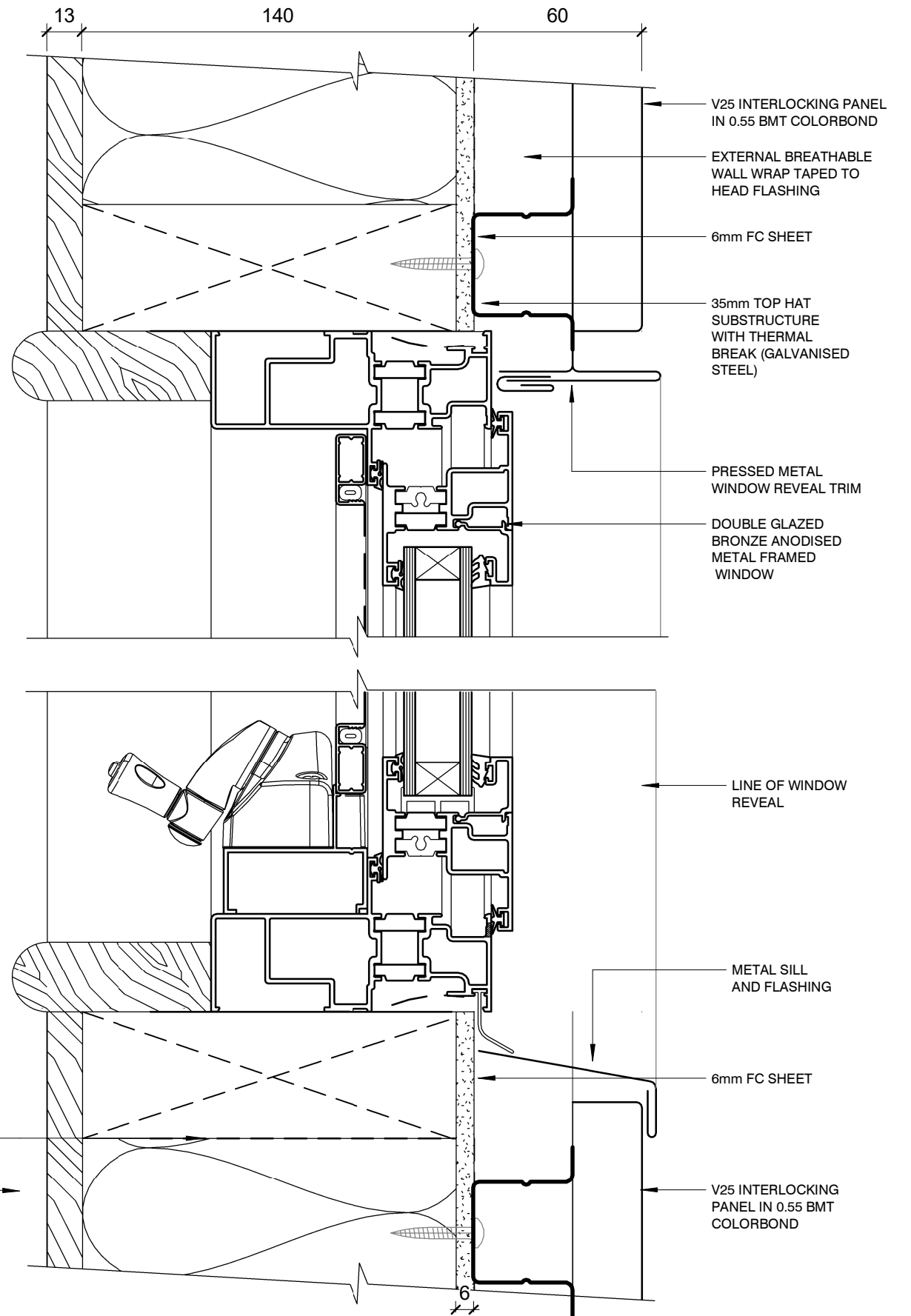
- NEW ALUMINIUM WINDOWS TO ADHERE TO  
AS3959:2018 STANDARDS AS REQUIRED

- WINDOW FRAMING FINISH  
COLORBOND MONUMENT



BULK WALL  
INSULATION

INTERNAL  
TIMBER BOARD  
LINING



02  
D01 VERTICAL SECTION - FIXED DOUBLE GLAZED WINDOW DETAIL  
1 : 2

ISSUE	DATE	SUBJECT	AUTHORISED
A	05/08/22	ISSUED FOR COMMENT	
B	03/06/24	ISSUED FOR REVIEW	
C	21/06/24	ISSUED FOR REVIEW	
D	11/07/24	ISSUED FOR COMMENT	

CONCEPT

This drawing should be read in conjunction with all  
relevant contracts, specifications and drawings.  
Dimensions are in millimetres. Levels are metres. Do not  
scale off drawings. Use figured dimensions only. Check  
dimensions on Site. Report discrepancies immediately.

PROJECT  
**CLADDING REPLACEMENT**  
**THREDBO ALPINE HOTEL**  
17 Friday Dr, Thredbo NSW 2625

CLIENT  
**Kosciuszko Thredbo Pty  
Ltd**  
AUTHORISED FOR ISSUE  
DIRECTOR DATE

ARCHITECT  
**djrd**  
architects  
T +612 9319 2955  
ABN: 48 942 921 969  
Nominated Architects:  
Andrew Hipwell 6562  
Daniel Beekwilder 6192  
63 Myrtle Street  
Chippendale NSW 2008  
Sydney Australia  
djrd.com.au

DRAWN	SCALE AT A3	PRINT DATE
Author	1 : 2	8/08/2024 12:36:20 PM
DESCRIPTION		
DETAILS		
PROJECT No	DRAWING No	REVISION
22_434	A2.102	D